

THE DAY I TRIED TO LIVE

As recorded by Soundgarden

(From the 1994 Album SUPERUNKNOWN)

A Intro

Slowly $\text{♩} = 45$

Bm Bsus2

B

Bm Bsus2 E

E5

Bm Bsus2

B

Bm Bsus2 E

E5

1

Gtr I *f* w/very slight dist.

T 10 9 7 10 9 13 13 13 16 16 10 9 7 10 9 13 13 13 16 16

A 0 0 0 0 0 11 11 11 14 14 0 0 0 0 0 11 11 11 14 14

B 7 7 7 7 7 0 0 0 0 0 7 7 7 7 7 0 0 0 0 0

sl. sl. sl. sl.

Gtr II w/dist. and slide *mf*

T 9 4 (4) 7 (7) 9 4 (4)

A

B

sl. sl. sl. sl. sl.

Bm Bsus2

B

Bm Bsus2 E

E5

Bm Bsus2

B

Bm Bsus2 E

E5

3

T 10 9 7 10 9 13 13 13 16 16 10 9 7 10 9 13 13 13 16 16

A 0 0 0 0 0 11 11 11 14 14 0 0 0 0 0 11 11 11 14 14

B 7 7 7 7 7 0 0 0 0 0 7 7 7 7 7 0 0 0 0 0

sl. sl. sl. sl.

T 7 (7) 9 4 (4) 7 (7) 9 (9) 7 7

A

B

sl. sl. sl. sl. sl. sl.

Bm Bsus2 B Bm Bsus2 E E5 Bm Bsus2 B Bm Bsus2 E E5

5

T 10 9 7 10 9 13 13 13 16 16 10 9 7 10 9 13 13 13 16 16

A 0 0 0 0 0 X X X X X 0 0 0 X X X X X

B 7 7 7 7 7 0 0 0 0 0 7 7 7 7 7 0 0 0 0 0

sl. sl. sl. sl.

17 (17) 12 12 (12) 17 (17) 12 12 (12) 17 (17) 12 12 (12) 17 (17) 7

sl. sl. sl. sl. sl. sl. sl. sl.

Faster ♩ = 66
(E5)

N.C.

7

T (16)

A (14)

B (0)

(7)

Gtr III w/ dist.

pp
P.M.-----|

T

A

B 5 5 0 12

B Verse

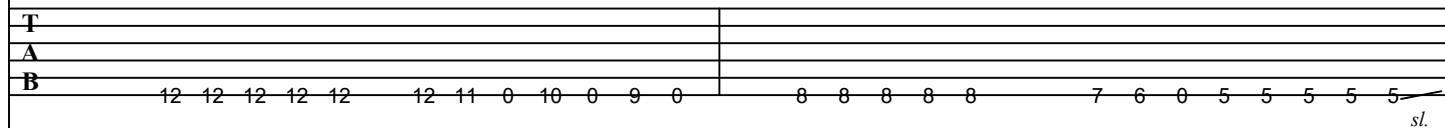
N.C.

Gtrs III, IV *p* w/ *dist.*

P.M.-----|

P.M.-----|

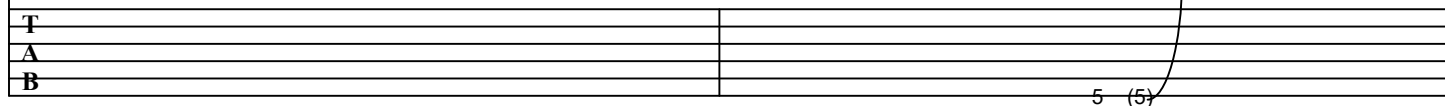
P.M.-----|



Gtr II (no slide)

mp

3/4



N.C.

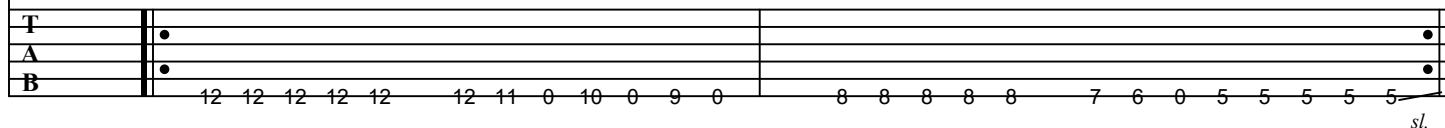


Gtrs III, IV

P.M.-----|

P.M.-----|

P.M.-----|



N.C.

F#

F

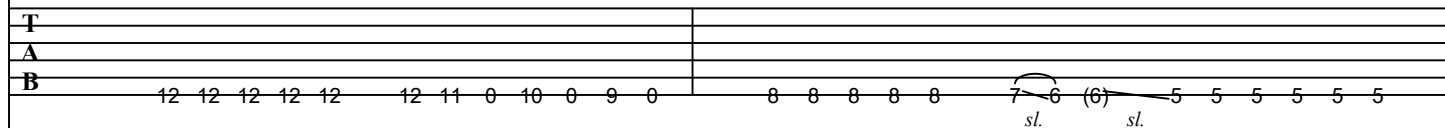
E



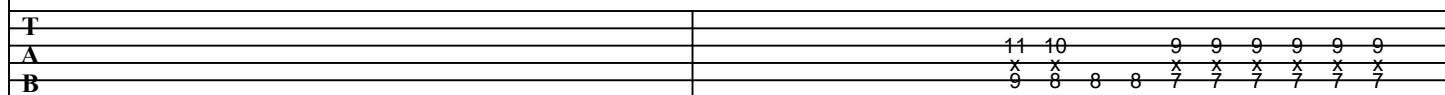
Gtrs III, IV

P.M.-----|

P.M.-----|

mf

Gtr II

f

C Chorus

[illegible]

23

A5 G#5 G5 F#5

T

A

B

7 7 7 7 7 6 5 3 3 4 4 4 4 4 4

5 5 5 5 5 4 3 3 2 2 2 2 2 2

T

A

B

9 9 9 9 9 8 7 6 6 6 6 6 6 6

x x x x x x x x x x x x x x

7 7 7 7 7 6 5 5 5 4 4 4 4 4 4

D Verse

24 N.C.
Gtrs III, IV *p*
P.M.-----| P.M.-----| P.M.-----|
T
A
B
12 12 12 12 12 | 12 11 0 10 0 9 0 | 8 8 8 8 8 | 7 6 0 5 5 5 5 5 *sl.*

26

N.C.

Gtrs III, IV
P.M.-----| P.M.-----| P.M.-----|

T
A
B

12 12 12 12 12 12 11 0 10 0 9 0 8 8 8 8 8 7 6 0 5 5 5 5 5

sl.

Gtr V (*clean*) *mf*

T
A
B

0 0 0
14 6 9

28

N.C. F# F E

Gtrs III, IV P.M.----- P.M.----- *mf*

T
A
B 12 12 12 12 12 12 11 0 10 0 9 0 8 8 8 8 8 7 6 (6) 5 5 5 5 5 5

sl. sl.

Gtr V

T
A
B 0 0 0 11 6 9

Gtr II

T
A
B 11 10 9 9 9 9 9 9 9 9 8 8 7 7 7 7 7 7

E Chorus

E5 D#5 D5 C#5 C5 B5 B#5 A5

30

Gtrs III, IV

T
A
B 14 14 14 14 14 14 13 12 11 11 11 10 10 10 9 9 9 10 10 10 10 10 9 8 6 6 6 7 7 7 7 7 7 7 7 7 7 7

Gtr II

T
A
B 16 16 16 16 16 16 15 14 13 12 12 12 11 11 11 12 12 12 12 12 11 10 9 9 9 9 9 9 9 9 9 9 9 9 9 9

32

B5 C5 E5 C#5

T
A
B

9 9 9 9 9 9 9 9 10 10 10 10 10 10 14 14 14 14 14 14 14 14 11 11 11 11 11 11 11

7 7 7 7 7 7 7 7 8 8 8 8 8 8 12 12 12 12 12 12 12 12 9 9 9 9 9 9 9

sl. sl.

34

E5 B5 C#5 C5 B5 B#5

T
A
B

14 14 14 14 14 9 9 9 9 9 9 9 11 11 11 11 11 11 10 8 8 8 9 7 7 8 6 6 6

12 12 12 12 12 7 7 7 7 7 7 7 9 9 9 9 9 9 8 8 8 7 7 7 6 6 6

sl.

36

A5 G#5 G5 F#5

T
A
B

7 7 7 7 7 6 5 3 3 3 4 4 4 4 4 4

5 5 5 5 5 4 3 3 3 2 2 2 2 2 2 2

9 9 9 9 9 8 7 6 6 6 6 6 6 6 6

7 7 7 7 7 6 5 5 5 4 4 4 4 4 4 4

F Bridge

37

B

Gtr II *mp*
N.H.-----|

T [12] [12]
A
B

Gtr V *mf*

T 0 5 7 0 0 5 7 0
A
B

39

Bm Bsus2 B Bm Bsus2 E E5 Bm Bsus2 B Bm Bsus2 E E5

Gtr I *mf*

T 10 9 7 10 9 10 9 7 10 9 10 9 7 10 9
A 0 0 0 0 0 13 13 13 16 16 13 13 13 16 16
B 7 7 7 7 7 11 11 11 14 14 11 11 11 14 14 0 0
sl. sl. sl. sl.

Gtr V

T 0 5 7 0 0 5 7 0
A
B

Bm Bsus2 B Bm Bsus2 E E5 N.C.

41

T 10 9 7 10 9 13 13 13 16 16 (16)
A 0 0 0 0 0 11 11 11 14 14 (14)
B 7 7 7 7 7 0 0 0 0 0 (0)

sl. sl.

Gtrs III, IV

p
N.H.-----|

T [12] [7]
A
B

G Chorus

C#5 C5 B5 Bb5 A5 G#5 G5 F#5

44

Gtrs III, IV *mf*

T 11 11 11 11 11 11 10 9 8 8 7 7 7 6 6 6 7 7 7 7 7 6 5 4 3 3 3 2 2 2 2 2 2 2
A 9 9 9 9 9 9 8 8 8 7 7 7 6 6 6 5 5 5 5 5 4 3 3 3 2 2 2 2 2 2 2
B 11 11 11 11 11 11 10 10 10 9 9 9 8 8 8 7 7 7 7 7 6 5 4 3 3 3 2 2 2 2 2 2 2

Gtr II *f*

T 13 13 13 13 13 13 12 11 10 9 9 9 8 8 8 9 9 9 9 9 8 7 6 6 6 6 6 6 6
A 11 11 11 11 11 11 10 10 10 9 9 9 8 8 8 7 7 7 7 7 6 5 5 5 4 4 4 4 4 4 4
B 11 11 11 11 11 11 10 10 10 9 9 9 8 8 8 7 7 7 7 7 6 5 5 5 4 4 4 4 4 4 4

46

B5 C5 E5 C#5

T
A
B

9 9 9 9 9 9 9 9 10 10 10 10 10 10 14 14 14 14 14 14 14 14 11 11 11 11 11 11 11

7 7 7 7 7 7 7 7 8 8 8 8 8 8 12 12 12 12 12 12 12 12 9 9 9 9 9 9 9

sl. sl.

48

E5 B5 C#5 C5 B5 Bb5

T
A
B

14 14 14 14 14 9 9 9 9 9 9 9 11 11 11 11 11 11 10 8 8 8 9 7 7 8 6 6 6

12 12 12 12 12 7 7 7 7 7 7 7 9 9 9 9 9 9 8 8 8 7 7 7 6 6 6

sl.

50

A5 G#5 G5 F#5

T
A
B

7 7 7 7 7 6 5 3 3 3 4 4 4 4 4 4

5 5 5 5 5 4 3 3 3 2 2 2 2 2 2 2

9 9 9 9 9 8 7 6 6 6 6 6 6 6 6

7 7 7 7 7 6 5 5 5 4 4 4 4 4 4 4

H Outro

51

N.C.

Gtrs III, IV *mp*
N.H.-----|

T [12] [7] [12] [7]

A

B

Gtr II *(feedback from Gtrs. 3 & 4)*

T 24

A

B

Gtr V *p*

T 0 0 0 0 0
11 6 9 11 6 9

A

B

N.C.

Gtrs III, IV
N.H.-----| *w/ slight feedback*

T [12] ((12)) ((12))

A

B

Fade Out

3x

3x

3x